



Superior Products, Inc

Creator & Supplier of Alaskan made *Superior Logs* packages
Distributor for Alaskan made steel roofing & siding



“THE 20’ X 24’ ORCA CABIN”

“ONE WHALE OF A CABIN!”

**A 20’ X 24’ recreational cabin in 6” SUPERIOR LOGS
with 1/2 loft & 4’ covered deck**

\$42,398.00* weathered-in shell materials package price

- 1) Main subfloor w/3/4" T & G U/L ply, 2 X 8 joist, block, rim& cedar, glue & metal log edge flash
- 2) 4' X 20' covered deck with steps all in Outdoor Wood (treated)
- 3) **Pre-cut 6" Alaskan made Superior Logs**, Swedish Cope, round milled, predrilled for 5/8" all thread bolts, hardware, gasket, engineered builder plans, log layout & stacking guide
- 4) 1/2 loft w/3/4" T & G U/L ply, 2 X 8 joist w/block, hangers, center GLB, glue, folding ladder & handrail
- 5) Low E Argon Almond vinyl windows w/screens, a 3' metal insulated door w/window, w/6" & 2 X 6 jambs, lockset & deadbolt, 1 X 6 cedar exterior & interior trim, gasket, shims & caulk
- 6) Interior framing: posts, log top plates, 6 X 6 posts
- 7) Gable framing: 2 X 6 studs w/plates & block, Tyvek, 1/2" CDX, R-21 batt insulation, 6 mil poly, 1 X 6 T & G #2 knotty pine exterior trim
- 8) Roof: 2 X 10 rafters, subfascia & cedar fascia, GLB ridge beam, 30# felt, ice shield, 1/2" CDX ext. sheath, R-21 batt insulation, 6 mil poly, Alaskan made 3' wide metal roof w/vented ridge cap, gable, log at floor & eave flashes, mastics & screws, overhangs & eaves all trimmed w/3/8" rough sawn plywood
- 9) Exterior log preservative, all hangers, brackets, clips, caulk, nails, fasteners, plus extra logs & framing

Other options! We will create a cabin or home to fit your needs & land!

- A) **For an 8" Superior Logs pre-cut package add \$4,296.00** B) AWW post & beam foundation w/brackets & lags; arctic subfloor w/CDX under sheath, R-30 batt insulation & 6 mil poly & 1 X 6 T & G #2 knotty pine interior trim. C) Prices are FOB Anchorage. Other delivery & crating are extra. D) Do-it-yourself or we'll refer builders. E) We'll refer real estate agents to help you find land.

Orca plan is on the back!

Prices subject to change without notice. *Call to verify!

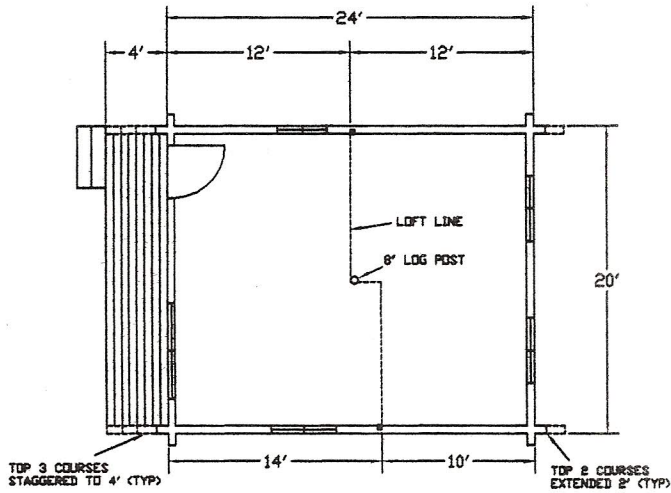
Visit our web site: www.superiorlogs.com

Phone # (907) 345-3323
Fax # (907) 345-0323

“Simple yet Superior”

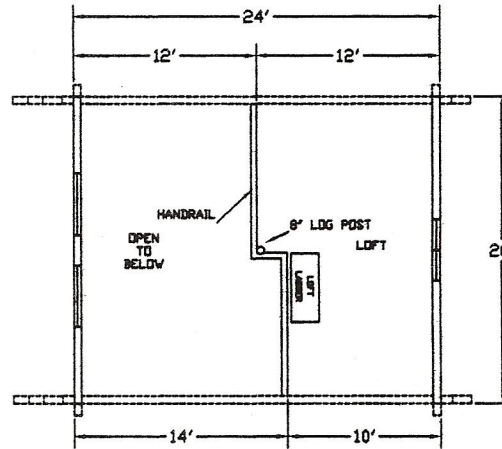
www.superiorlogs.com
Email: spialaska@gci.net

P. O. Box 110469, Anchorage, Alaska 99511-0469

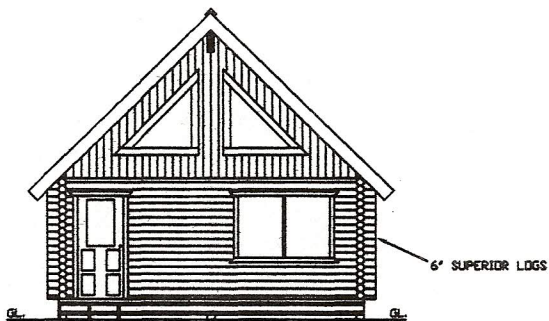


MAIN FLOOR PLAN = 480 SQ. FT.

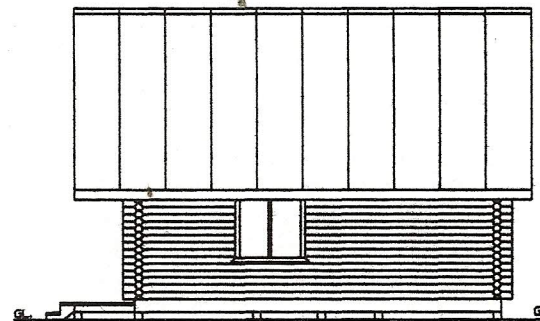
700 SQ. FT. TOTAL



LOFT FLOOR PLAN = 220 SQ. FT.



FRONT VIEW



SIDE VIEW

SUPERIOR PRODUCTS

(800) 345-3323
FAX

P.O. BOX 111469
SHELDON, ALASKA
99581-0146

THE "ORCA"
"A WHALE OF A CABIN"

Drawn By	
Checked By	
Revised	
3/1/94	
1/6/94	
2/7/94	
2/1/94	
12/2/93	
1/7/94	

Job No.
Date 2/22/94