



Superior Products, Inc

Creator & Supplier of Alaskan made *Superior Logs* packages
Distributor for Alaskan made steel roofing & siding



"THE 26' X 32' SUSITNA IV"

"A PLACE TO RELAX FOR ANY SLEEPING LADY!"

**A 26' X 32' residential weathered-in shell materials package
in 8" SUPERIOR LOGS with 1/2 loft, interior framing, 4' & 8' decks**

\$68,569.00* weathered-in shell materials package price

- 1) Main subfloor w/3/4" T & G U/L ply, 11 7/8" BCI joist, block, rim, glue & metal log edge flash
- 2) 4' side & 8' front uncovered decks with steps all in treated Outdoor Wood
- 3) **Pre-cut 8" Alaskan made Superior Logs**, Swedish Cope, round milled, predrilled for 5/8" all thread bolts, package w/hardware, gasket, engineered builder plans, log layout & stacking guide
- 4) 1/2 loft w/3/4" T & G U/L ply, center GLB, 9 1/2" BCI joist, block, rim, hangers & glue
- 5) Low E Argon Almond vinyl windows w/screens, a 3' metal insulated door w/top window w/8" & 2 X 8 jambs, deadbolt & lockset, 1 X 6 cedar exterior & interior trim, gasket, shims & caulk
- 6) Interior framing: rough stud 2 X 4 & 2 X 6 walls w/plates & block, stairs, posts & log top plates
- 7) Gables & shed dormers framing: 2 X 6 studs w/plates & block, 1/2" CDX, Tyvek, R-21 batt insulation, 6 mil poly, 1 X 6 T & G #2 knotty pine exterior trim
- 8) Roof: 14" rafters, subfacia & cedar facia, GLB ridge beam, clips, top straps, 1/2" CDX, 30 lb. felt, ice shield, HD R-38 batt insulation, 6 mil poly, Alaskan made 3' wide colored metal roof with vented ridge cap, gable, valley, log at floor & eave flashes, mastics & screws, overhangs & eaves trimmed w/rough sawn 3/8" plywood
- 9) Exterior log preservative, hangers, brackets, caulk, fasteners, plus extra logs & framing

Other Options! We will create a home to fit your needs & land!

A) **10" pre-cut Superior Logs package add \$4,896.00** B) Parallel chord truss roof system & 1 X 6 T & G #2 knotty pine interior trim C) Prices are FOB Anchorage. Other delivery & crating are extra. D) Do-it-yourself or we'll refer builders. E) We'll refer real estate agents to help you find land.

Susitna IV plan is on the back!

*Prices subject to change without notice. *Call to verify!!*

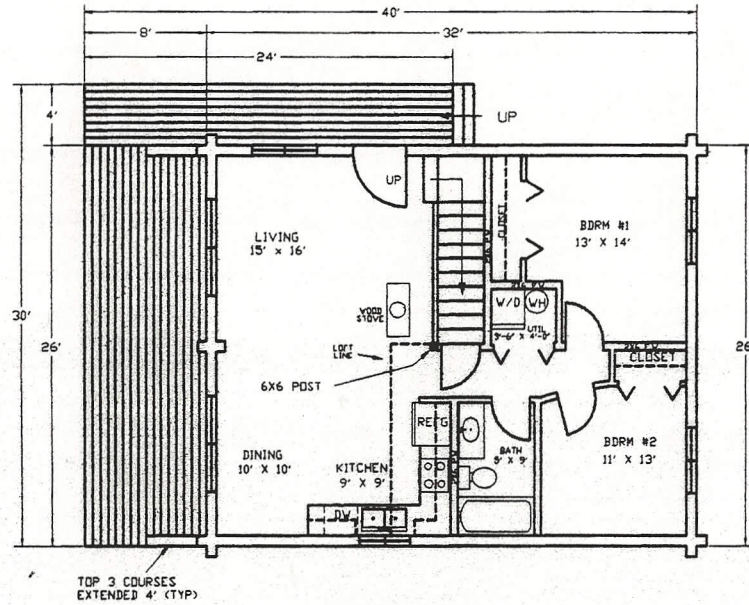
Visit our web site: www.superiorlogs.com

Phone # (907) 345-3323
Fax # (907) 345-0323

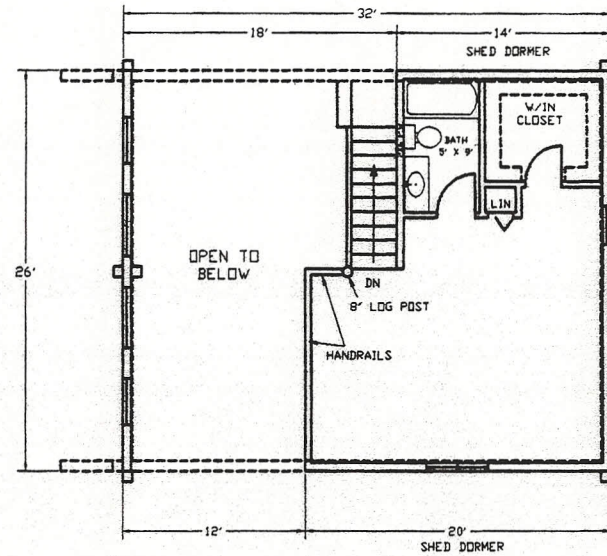
"Simple yet Superior"

P. O. Box 110469, Anchorage, Alaska 99511-0469

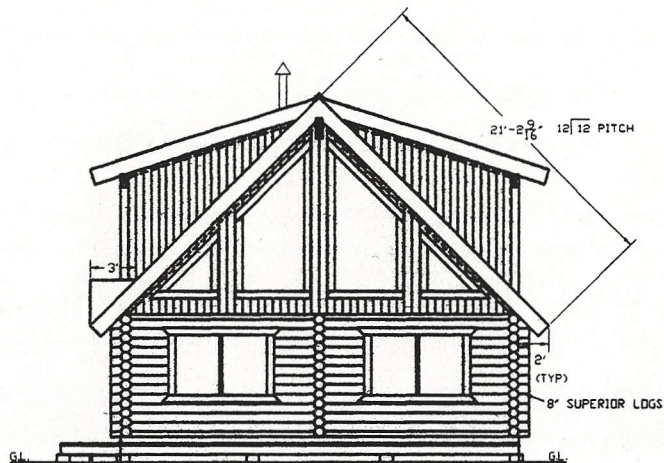
www.superiorlogs.com
Email: spialaska@gci.net



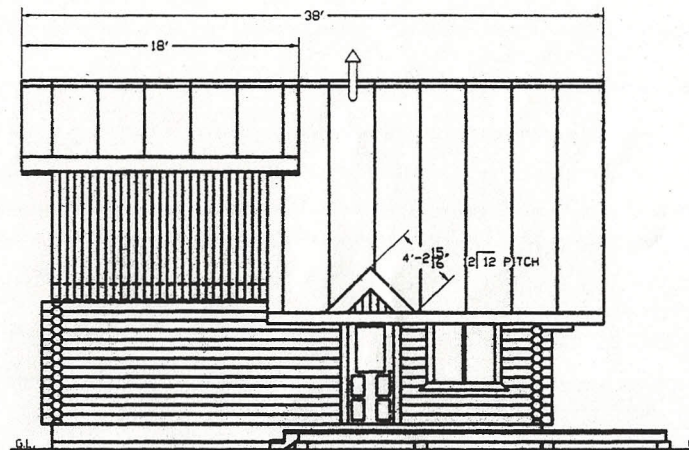
MAIN FLOOR PLAN = 832 SQ. FT.



1,274 TOTAL SQ. FT. LOFT FLOOR PLAN = 442 SQ. FT.



FRONT SIDE VIEW



LEFT SIDE VIEW

SUPERIOR PRODUCTS
 P.O. BOX 110469
 ANCHORAGE, ALASKA
 99511-0469
 (907) 345-3333
 FAX: 345-0923

THE "SUSITNA IV"
 SUBJ:
 LT.#
 BLK.#

Drawn	EL
Checked	JD
Revisions	
Job No.	
Date	12/30/07
1	