



# Superior Products, Inc

Creator & Supplier of Alaskan made *Superior Logs* packages  
Distributor for Alaskan made steel roofing & siding



## **“THE 24’ X 28’ KENAI PRINCE IV”**

***“THE SILVER CHALICE FITS THIS PRINCE!”***

**A 24' X 28' residential home in 8" SUPERIOR LOGS with 1/2 loft,  
6' X 24' covered deck, 2 shed dormers, full basement & interior framing**

### **\$63,583.00\* weathered-in shell materials package price**

- 1) Main subfloor w/3/4" T & G U/L ply, 11 7/8" BCI joist, rim, block, glue & metal log edge flash
- 2) 6' X 24' uncovered deck with steps all in Outdoor treated wood
- 3) **8" Alaskan made pre-cut Superior Logs**, Swedish Cope, round milled, predrilled for 5/8" all thread bolts, hardware, gasket, engineered builder plans, log layout & stacking guide
- 4) Interior framing: rough 2 X 4 & 2 X 6 walls w/plates & block, stairs, posts & log top plates
- 5) 1/2 loft w/3/4" T & G U/L ply, center GLB, 9 1/2" BCI joist, rim, block, hangers & glue
- 6) Low E Argon Almond vinyl windows w/screens, a 3' metal insulated door w/top window, 8" & 2 X 8 jambs, lockset & deadbolt, 1 X 6 cedar exterior & interior trim, gasket, shims & caulk
- 7) Gable, dormer & basement ext. framing: 2 X 6 studs w/plates & block, 1/2" CDX, Tyvek, R-21 batt insulation, 6-mil poly, 1 X 6 T & G #2 knotty pine exterior trim, T1-11 w/1 X 3 cedar on basement
- 8) Roof: 14" rafters, subfascia & cedar fascia, GLB ridge, clips, top straps, 1/2" CDX, 30 lb. felt, ice shield, HD R-38 batt insulation, 6 mil poly, Alaskan made 3' wide metal roof cap, vented ridge, gable, log at floor & eave flashes, mastic & screws, overhangs & eaves trimmed w/rough sawn 3/8" plywood
- 9) Exterior log preservative, hangers, brackets, caulk, fasteners, plus extra logs & framing

### **Other options! We will design a cabin or home to fit your needs & land!**

A) **For pre-cut 10" Superior Logs add \$4,864.00 & deduct \$3,324.00 for basement.** B) AWW post & beam foundation w/brackets & lags; arctic subfloor w/CDX under sheath, R-30 batt insulation & 6 mil poly & 1 X 6 T & G #2 knotty pine interior ceiling trim C) Prices is FOB Anchorage. Other delivery & crating is extra. D) Do-it-yourself or we'll refer builders. E) We'll refer real estate agents to help you find land.

### **Kenai Prince IV plan is on the back**

\*Prices subject to change without notice. \*Call to verify!!\*

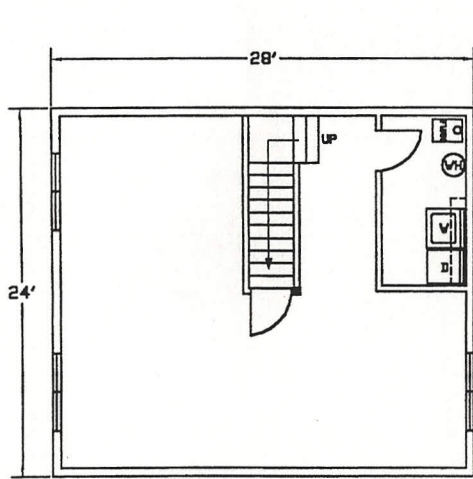
**Visit our web site: [www.superiorlogs.com](http://www.superiorlogs.com)**

Phone # (907) 345-3323  
Fax # (907) 345-0323

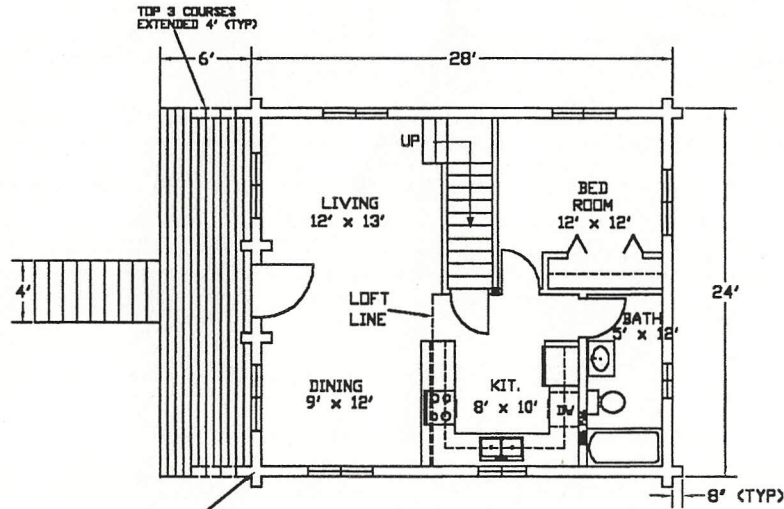
***“Simple yet Superior”***

P. O. Box 110469, Anchorage, Alaska 99511-0469

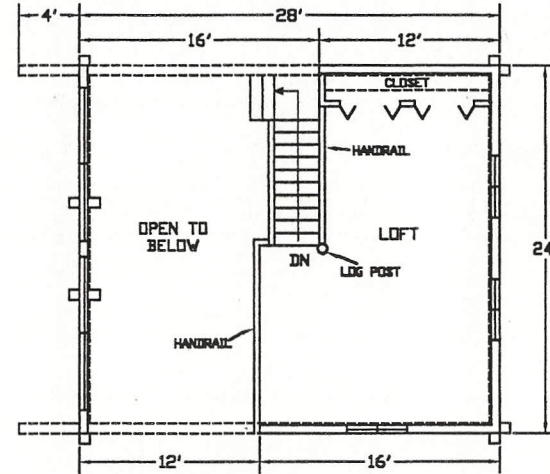
[www.superiorlogs.com](http://www.superiorlogs.com)  
Email: [spialaska@gci.net](mailto:spialaska@gci.net)



**BASEMENT FLOOR PLAN = 672 SQ. FT.**  
SCALE 1/4" = 1'-0"

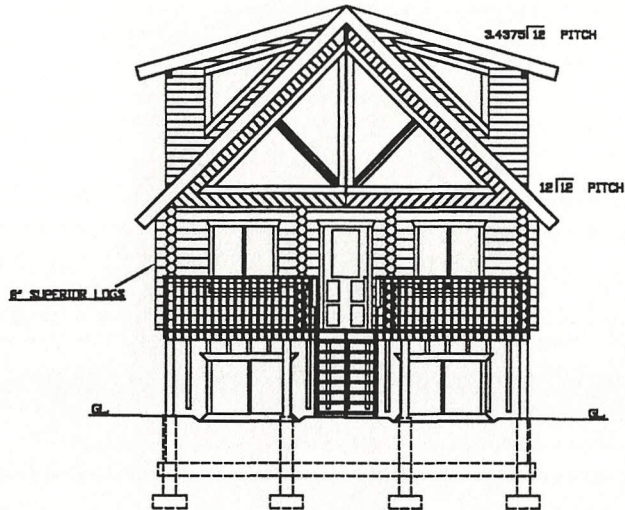


**MAIN FLOOR PLAN = 672 SQ. FT.**  
SCALE 1/4" = 1'-0"

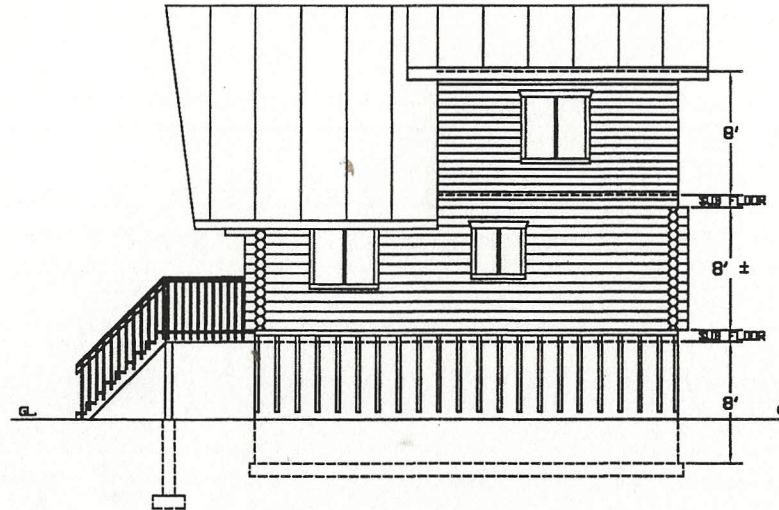


**LOFT FLOOR PLAN = 336 SQ. FT.**  
SCALE 1/4" = 1'-0"

**1,680 TOTAL SQ. FT.**



**FRONT VIEW**  
SCALE 1/4" = 1'-0"



**RIGHT SIDE VIEW**  
SCALE 1/4" = 1'-0"

**SUPERIOR PRODUCTS**

PO BOX 101463  
99581-0665 ALASKA  
FAX: 345-3323

THE "KENAI PRINCE IV"

Drawn By	
Checked By	
Designed	
Scale	
Date	
Job No.	
Sheet	E/8/02