



Superior Products, Inc

Creator & Supplier of Alaskan made *Superior Logs* packages
Distributor for Alaskan made steel roofing & siding



“THE 26’ X 40’ ALEUTIAN”

“A PLACE TO RETIRE IN THE ISLANDS!”

**The 26’ X 40’ residential weathered-in shell materials package
in 8" SUPERIOR LOGS w/1/2 loft, shed dormer, 4' & 6' decks**

\$76,847.00* weathered-in shell materials package price

- 1) Main subfloor w/3/4" T & G U/L ply, 11 7/8" BCI joist, block, rim, glue & metal log edge flash
- 2) 6' front uncovered & 4' side covered & uncovered decks with steps all in treated Outdoor Wood
- 3) **Pre-cut 8" Alaskan made Superior Logs**, Swedish Cope, round milled, predrilled for 5/8" all thread bolts, package w/hardware, gasket, engineered builder plans, log layout & stacking guide
- 4) 1/2 loft w/3/4" T & G U/L ply, center GLB, 11 7/8" BCI joist, block, rim, hangers & glue
- 5) Low E Argon Almond vinyl windows w/screens, a 6' glass & 2 - 3' metal door w/top window, 8" & 2 X 8 jambs, deadbolts & locksets, 1 X 6 cedar exterior & interior trim, gasket, shims & caulk
- 6) Interior framing: rough stud 2 X 4 & 2 X 6 walls w/plates & block, posts, stairs & log top plates
- 7) Gable & dormer exterior framing: 2 X 6 studs w/plates & block, Tyvek, 1/2" CDX, R-21 batt insulation, 6 mil poly, 1 X 6 T & G #2 knotty pine exterior trim
- 8) Roof: 14" rafters, subfascia & cedar fascia, GLB ridge beam, clips, top straps, 1/2" CDX, 30 lb. felt, ice shield, HD R-38 batt insulation, 6 mil poly, Alaskan made 3' wide colored metal roof w/vented ridge cap, gable, eave, sidewall, valley, log at floor & transition flashes, mastics & screws, overhangs, porch & eaves trimmed w/rough sawn 3/8" plywood
- 9) Exterior log preservative, hangers, brackets, caulk, fasteners plus extra logs & framing

Other Options! We will create a cabin or home to fit your needs & land!

- A) **10" pre-cut Superior Logs package add \$5,988.00** B) 24" Parallel chord truss roof system, 1 X 6 T & G #2 knotty pine interior trim C) Prices are FOB Anchorage. Delivery, handling & crating are extra. D) Do-it-yourself or we'll refer builders. E) We'll refer real estate agents to help you find land.

Aleutian plan is on the back!

*Prices subject to change without notice. *Call to verify!!*

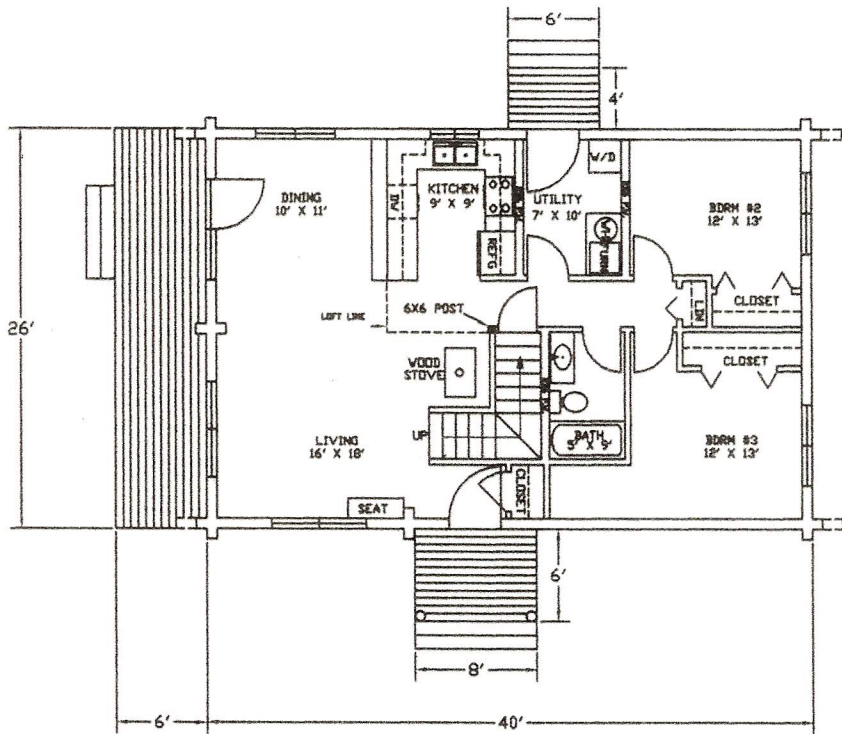
Visit our web site: www.superiorlogs.com

Phone # (907) 345-3323
Fax # (907) 345-0323

“Simple yet Superior”

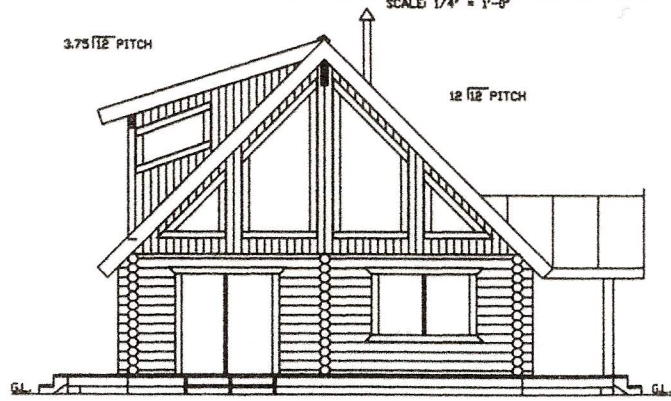
P. O. Box 110469, Anchorage, Alaska 99511-0469

www.superiorlogs.com
Email: spialaska@gci.net



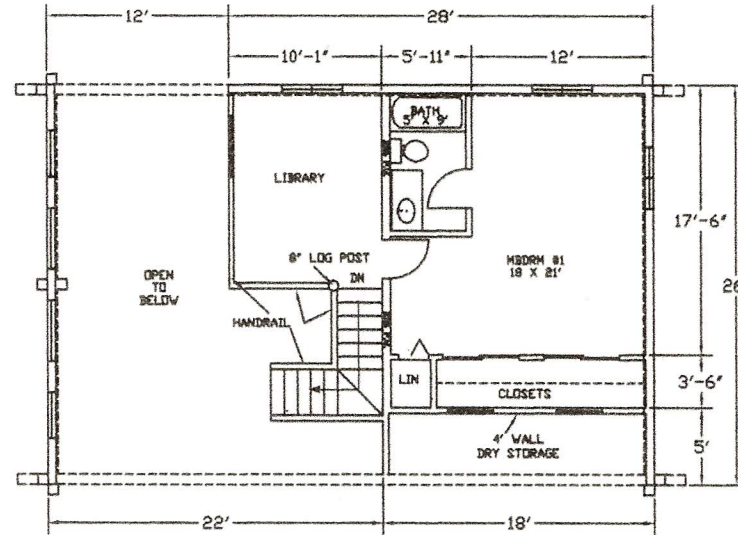
FIRST FLOOR PLAN 1,040 SQ. FT.

SCALE: 1/4" = 1'-0"



LEFT SIDE VIEW

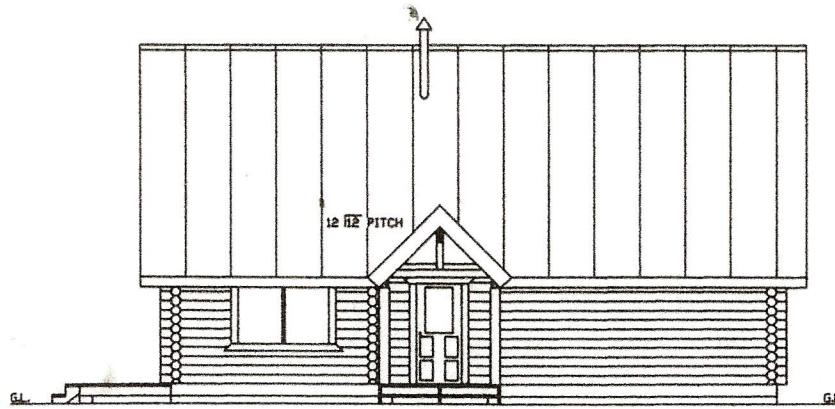
SCALE: 1/4" = 1'-0"



LOFT FLOOR PLAN 520 SQ. FT.

SCALE: 1/4" = 1'-0"

1,560 TOTAL SQ. FT.



FRONT VIEW

SCALE: 1/4" = 1'-0"

SUPERIOR PRODUCTS

P.O. BOX 110465
 SHELBY, ALASKA
 99581-0465 (907) 345-3323
 FAX: 345-0323

THE "ALEUTIAN"

1/1/96	DL
2/1/96	JL
3/1/96	JL
4/1/96	JL
5/1/96	JL
6/1/96	JL
7/1/96	JL
8/1/96	JL
9/1/96	JL
10/1/96	JL
11/1/96	JL
12/1/96	JL

Job No.
 Date 4/13/96